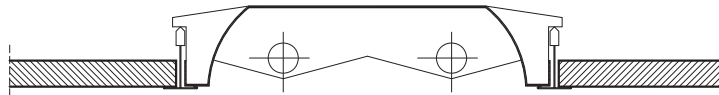


## Linear Lighting Integration

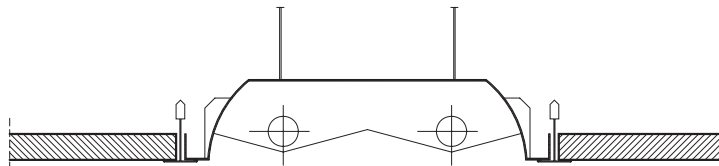
Ceiling layouts often include linear (continuous) lighting systems for both functional and aesthetic reasons. Integration of this type of lighting into a modular exposed T or semi-concealed plank ceiling grid system is possible and there are several alternate ways in which it can be accomplished.

1) The modular exposed tee ceiling grid is continuous and the linear lighting is integrated by substituting individual fittings in place of ceiling tiles in a linear pattern. With this method it is likely that the lighting fittings will be supported on the ceiling grid. If the ceiling module is 600x600 and the lighting fittings are 600x300, then it will be necessary to create a half module layout in one direction with one of the tiles in each module site cut to a 600x300 size.



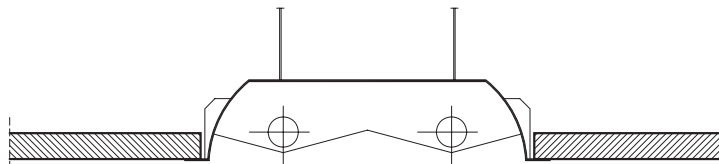
DETAIL 1: [ SP4-001 ]

2) The linear lighting is a continuous (independently supported) lighting trough located between areas of modular ceiling grid. Alongside the edge of each trough are main runners that form the boundary of the modular ceiling which will be comprised of either tiles or planks.



DETAIL 2: [ SP4-002 ]

3) The linear lighting is a continuous (independently supported) lighting trough located between areas of modular ceiling grid. The edges of each trough are turned out so as to form a ledge upon which the ceiling system, comprised of tiles or planks, is supported. SL2 planks may be able to span between the lighting troughs without the aid of intermediate support. With this system spacer bars or similar ties will be needed to ensure that the spacing between parallel troughs is maintained.



DETAIL 3: [ SP4-003 ]

### Notes:

The above details are only indicative. It is the responsibility of the specifier or installer to ensure that the lighting fittings are compatible with the ceiling system and, in the case of example 1), that the fittings can be supported onto the grid without damage or excessive deflection.