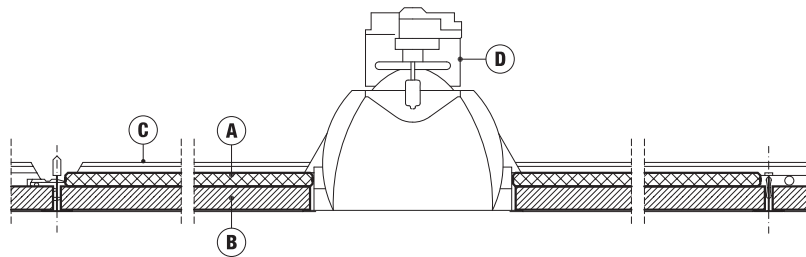


Tile Mounted Service Fittings

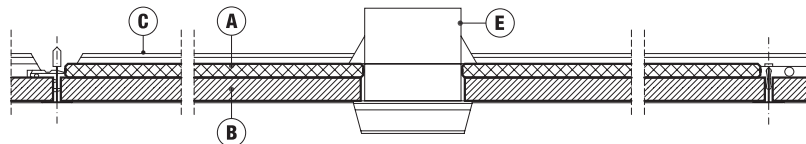
Smaller service fittings (downlighters, smoke detectors, sprinklers, loudspeakers etc) if required to be integrated in the ceiling, will have to be installed within the ceiling tile.

Wet felt and soft fibre tiles in particular, are not capable of sustaining weighty fittings without permanent damage and failure. In most instances the load of such fittings must be distributed by use of either a ceiling pattress or else by being independently supported.

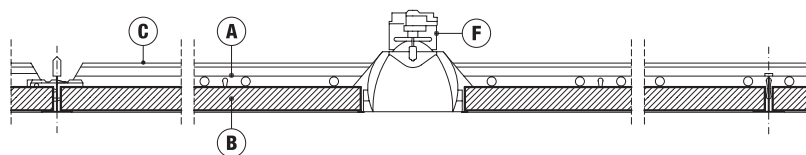
The following two generic details show how service fittings may be integrated within the ceiling tile and have their load transferred on to the grid. The third shows that it is possible for a low weight small halogen lighting fitting to be supported directly on the tile.



DETAIL 1: [SP3-001]



DETAIL 2: [SP3-002]



DETAIL 3: [SP3-003]

- A - Pattress
- B - Ceiling Tile
- C - Grid Profile
- D - Downlighter
- E - Smoke Detector
- F - Halogen Spotlight

Notes:

- 1) The above details are only indicative. It is the responsibility of the specifier or installer to ensure that the fittings can be supported without damage or excessive deflection of the tiles and grid.
- 2) A pattress may be formed from gypsum board or similar thin rigid sheet. It is essential to ensure that the material chosen has a fire reaction performance equivalent to that of the reverse face of the ceiling tile.